

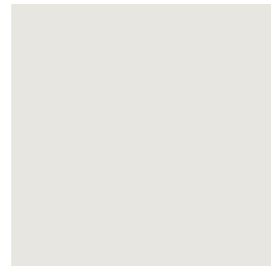
BOJA KOLEKCIJA MDF / COLOR COLLECTION MDF / FARBSAMMLUNG MDF /  
COLLECTION DE COULEURS MDF



NCS S 9000-N



NCS S 8500-N

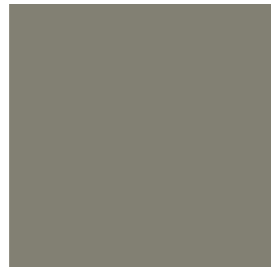


NCS S 0500-N

neutralna /  
neutral /  
neutral /  
neutre



NCS S 8505-G80Y



NCS S 5005-G80Y



NCS S 2005-G80Y

sivo zelena /  
gray green /  
grau grün /  
gris vert



NCS S 5540-G50Y

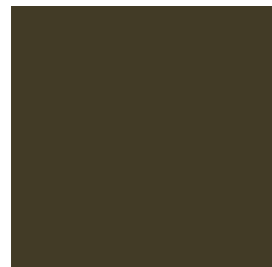


NCS S 3030-G50Y



NCS S 1515-G40Y

zelena /  
green /  
grün /  
vert



NCS S 8010-G90Y



NCS S 4010-G90Y



NCS S 2010-G90Y

zeleno žuta /  
green yellow /  
grün gelb /  
vert jaune



NCS S 3060-Y80R



NCS S 2030-Y90R



NCS S 0507-R

smeđe crvena /  
brown red /  
rotbraun /  
marron rouge



NCS S 7020-Y70R



NCS S 4020-Y70R



NCS S 2005-Y60R

crvena /  
red /  
rot /  
rouge



NCS S 5040-B10G



NCS S 4020-B10G

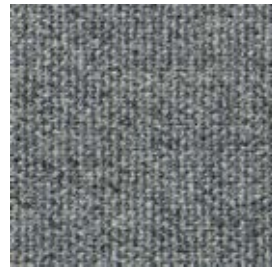


NCS S 1515-R90B

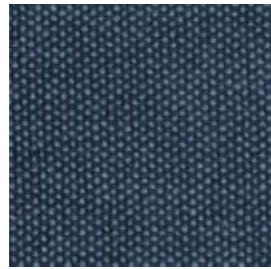
plava /  
blue /  
blau /  
bleu

TKANINE I KOŽA / FABRIC AND LEATHER / STOFFE UND LEDER / TISSUS ET CUIR

KATEGORIJA A / CATEGORY A / KATEGORIE A / CATÉGORIE A



LEAD - IF058



TUSCANY - IF241



WEDGWOOD - IF027

**Camira Main Line Plus *Link***

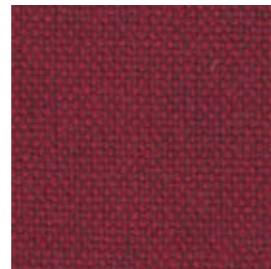
67% vuna, 20% vatroporna viskoza,  
13% viskoza /  
67% wool, 20% fireproof viscose,  
13% viscose /  
67% Wolle, 20% feuerfeste Viskose,  
13% Viskose /  
67% laine, 20% viscose ininflammable,  
13% viscose



GIRDER - IF276



WINE - IF019



MATADOR - IF272



ARITHMETIC - AK018



NUMBER - AK020



VALUE - AK006

**Camira X2 *Link***

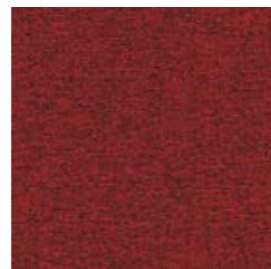
100% reciklirani FR poliester B1 /  
100% recycled FR polyester B1 /  
100% recyceltes FR-Polyester B1 /  
100% polyester FR recyclé B1



EQUATION - AK004

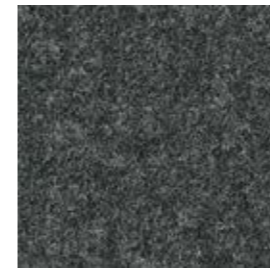


PERCENTAGE - AK016



MULTIPLY - AK014

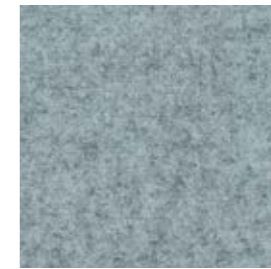
KATEGORIJA B / CATEGORY B / KATEGORIE B / C B



SILCOATES - CUZ30



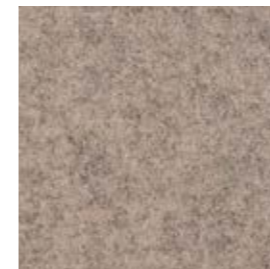
GLENALMOND - CUZ62



PLYMOUTH - CUZ1R

**Camira Blazer *Link***

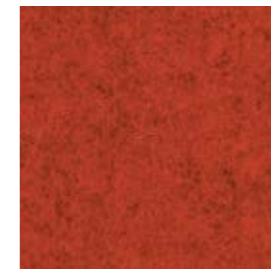
100% vuna /  
100% wool /  
100% Wolle /  
100% laine



ST ANDREWS - CUZ86

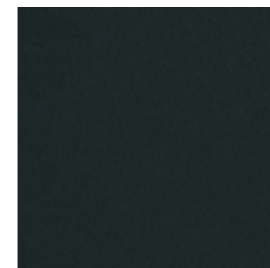


DUNHURST - CUZ58

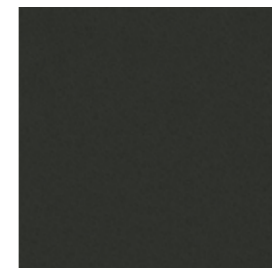


EDGE HILL - CUZ90

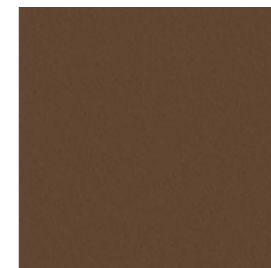
KATEGORIJA C / CATEGORY C / KATEGORI C / CATÉGORIE C



TOUCH 622002



TOUCH 611174



TOUCH 608124

**Mercis Leather Touch *Link***

100% koža /  
100% leather /  
100% Leder /  
100% cuir

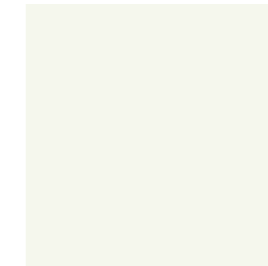
POVRŠINSKA OBRADA / MATERIAL FINISH / MATERIALOBERFLÄCHE / FINITION



RAL 9005



RAL 7016



RAL 9010

teksturirana mat plastifikacija metala /  
textured matt powder coated metal /  
strukturierte matte Metallplastifizierung /  
métal enduit de poudre texturé



OILED AM. WALNUT



OILED OAK

puno drvo /  
solid wood /  
Massivholz /  
bois massif



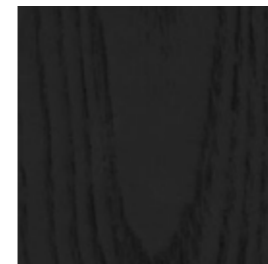
SOFT TOUCH LACQ. AM. WALNUT



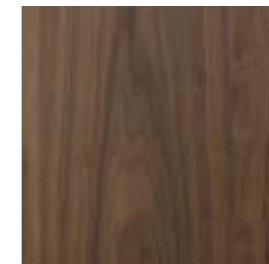
SOFT TOUCH LACQ. OAK



furnir /  
vener /  
Furnier /  
placage



BLACK STAINED OAK



SOFT TOUCH LACQ. AM. WALNUT



SOFT TOUCH LACQUERED



PRADO AGATE GREY



PRADO ALU GREY

kompakt/  
compact /  
kompakt /  
compact /